

FATSCO
PET & TINY-TOT
COMBINATION STOVES

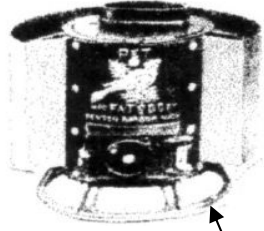


FATSCO
J & B Yeomans
5660 N. 7 Rd.
Mesick, MI 49668

(231) 885-3288 <http://www.fatscostoves.com/>

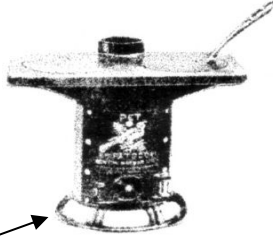
FATSCO PET & TINY-TOT COMBINATION STOVES

NO. 450 Pet Stove
w/ Shield (10 1/2") Dia.
Ht. 9 1/2 " - Wt. 13 lb.



Lantern Base 8 1/2 "

NO. 450 - 2L (2 Lid Pet Stove)
(6") Dia. Cooking Top 9"x14 1/2"
Ht. 13 " - Wt. 24 lb.



STOVE

STOVE #

PRICE

TINY TOT - w/ stainless steel body,
(Marine)

#400

\$ 229.00

TINY TOT stove Comb. Cook &
Heat stainless steel body, (Marine)

#400 (2L)

\$ 367.00

PET -w/ stainless steel body, (Marine)

#450

\$ 223.00

PET stove Comb. Cook & Heat
stainless steel body, (Marine)

#450 (2L)

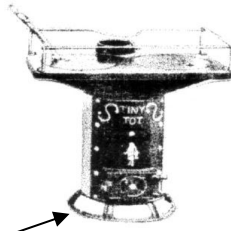
\$ 361.00

NO. 400 Tiny Tot Stove
(6") Dia.
Ht. 11 1/2 " - Wt. 15 lb.



Lantern Base 8 1/2 "

NO. 450 - 2L (2 Lid Tiny Tot Stove)
With Sea Rail / Cook Top 9"x14 1/2"
Ht. 15 " - Wt. 26 lb.



COMPLETE KIT to convert TINY TOT
COMPLETE KIT to convert PET
to (2L) COOK & HEAT COMB.

#400 (KIT)

\$ 138.00

#450 (KIT)

\$ 138.00

SEA RAIL for TINY TOT Cook &
Heat Combination

#400 (R)

\$ 50.00

SEA RAIL for PET Cook & Heat
Combination

#400 (R)

\$ 50.00

NO. 200 Buddy Stove
w/ Shield (15") Dia.
Ht. 21 1/2 " - Wt. 31 lb.



Discontinued

NO. 200 - 2L (Lid Buddy Stove)
Cook Top 10 1/2 x 18" / Ht. 25 1/2 "
9 3/4 Dia. - Wt. 55 lb.

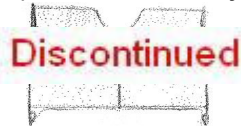


Discontinued

Ash Shovel (Marine S.S.)
3/4 lb.



SEA RAIL for Pet & Tiny Tot Cook Tops
(1/2 lb.) SEA RAIL for Buddy (3/4 lb.)



Discontinued

use amount of good comfortable heat for their diminutive size.
to-install, attractive, efficient and very inexpensive.
beauties use coal or charcoal briquettes.

WARNING

Read or Local Fire Specifications before installing stove.
Use only coal or charcoal briquettes.

THANK YOU.

FATSCO (231) 885-3288

FATSCO PET & TINY-TOT COMBINATION STOVES

STOVE SHIELDS MARINE (S.S.)

SHIELD and WEIGHT	PART #	PRICE
TINY TOT 400 - 3 lb.	#400-S	\$ 72.00
PET 450 - 1 lb.	#450-S	\$ 60.00

STOVE BODIES MARINE (S.S.)

BODIES and WEIGHT	PART #	PRICE
TINY TOT 400 - 1 1/2 lb.	#419-S	\$ 36.00
PET 450 - 1 lb.	#418-S	\$ 36.00

STOVE FRONT CASTING

CASTING and WEIGHT	PART #	PRICE
TINY TOT 400 - 4 lb.	#401	\$ 43.00
PET 450 - 2 lb.	#451	\$ 36.00

COOKING TOPS

DESCRIPTION and WEIGHT	PART #	PRICE
TINY TOT Firebowl - 7 lb.	#423	\$ 61.00
PET Firebowl - 7 lb.	#423	\$ 61.00
TINY TOT Cook Plate - 3 lb.	#422	\$ 36.00
PET Cook Plate - 3 lb.	#422	\$ 36.00
TINY TOT Lid Round - 5 5/8 lb.	#10 rd	\$ 15.00
Ash Shove (Marine S.S.) 3/4 lb.		\$ 30.00

STOVE PARTS - PRICE LIST

DESCRIPTION and WEIGHT	PART #	PRICE
TINY TOT Ash Door Cast - 1/2 lb.	#404	\$ 15.00
PET Ash Door Cast - 1/2 lb.	#404	\$ 15.00
TINY TOT T-Cast 3" Oval Collar - 1 lb.	#402	\$ 15.00
PET Top Cast 3" Oval Collar - 1 lb.	#402	\$ 15.00
TINY TOT Lid Cast D-Shape - 1 lb.	#406	\$ 9.00
PET Lid Cast D-Shape - 1 lb.	#406	\$ 9.00
TINY TOT Firepot Cast - 3 lb.	#409	\$ 34.00
PET Firepot Cast - 3 lb.	#409	\$ 34.00
TINY TOT Grate Cast - 1 lb.	#408	\$ 15.00
PET Grate Cast - 1 lb.	#408	\$ 15.00
TINY TOT Bottom Cast - 1 lb.	#403	\$ 18.00
PET Bottom Cast - 1 lb.	#403	\$ 18.00
TINY TOT Leg Cast - 3 oz.	#914	\$ 4.50
PET Leg Cast - 3 oz.	#914	\$ 4.50
TINY TOT Lantern type Base - 2 1/2 lb.	#420	\$ 36.00
PET Lantern type Base - 2 1/2 lb.	#420	\$ 36.00
TINY TOT Draft Regular - 1 oz.	#405	\$ 4.50
PET Draft Regular - 1 oz.	#405	\$ 4.50
TINY TOT Hinge Bracket - 1 1/2 oz.	#205	\$ 4.50
PET Hinge Bracket - 1 1/2 oz.	#205	\$ 4.50
TINY TOT Door Catches P1	Sm.	\$ 1.35
PET Door Catches P1	Sm.	\$ 1.35

STOVE PARTS - PRICE LIST

TINY TOT, & PET	Stove Knobs	\$ 3.00
TINY TOT, & PET (CAST) - 6 oz.	Lifter-Shaker	\$ 9.00